

SM79D Lamp Bracket Round Base

Please note that the folds can be performed with smooth faced pliers. The 90 degree folds have the half etch on the inside, the 180 degree folds have the half etch on the outside

Safety warning.

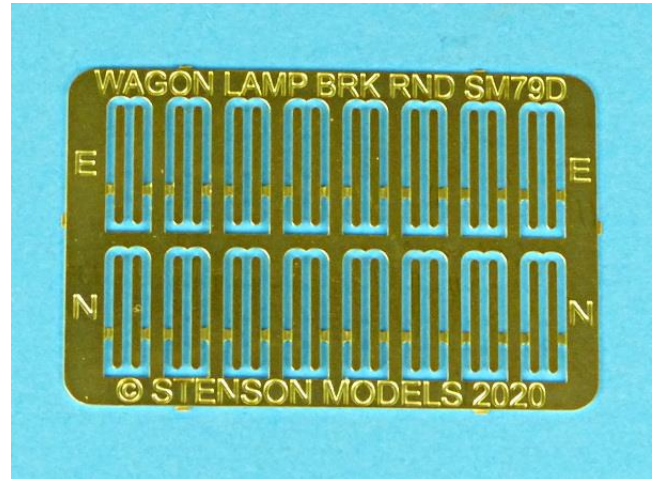
This kit is suitable for adults only. There are small and/or sharp components. The castings and recommended solders contain lead. Observe appropriate hygiene precautions; do not eat or handle food without first washing hands. The tools and materials recommended also require the care in handling; protection for the eyes and face (dust mask) must be applied when soldering and using a mini-drill.

Parts List

1:- Lamp Iron Fret, note that

Brackets marked E are 'extended' variants for BDA wagons or similar.

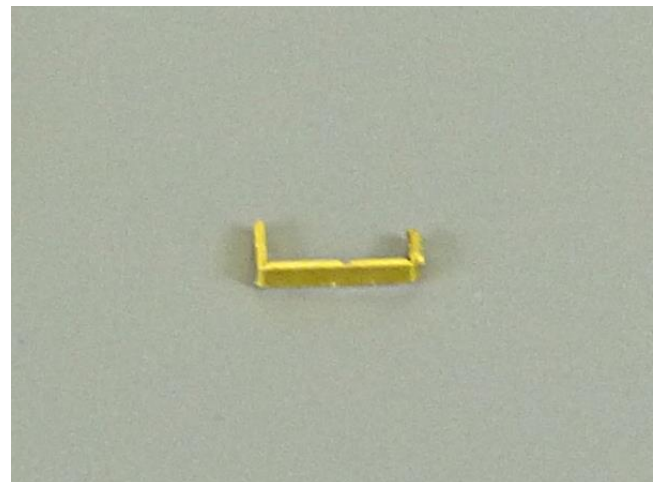
Brackets marked N are 'normal' size for other wagons.



1. Release one of the lamp brackets from the fret.

N.B. If you are forming the rivets it is advised to do this first.

Bend the ends at 90° with the half etch line on the inside.



2. Now bend the lamp brackets through 180° at the centre with the half etch on the outside.



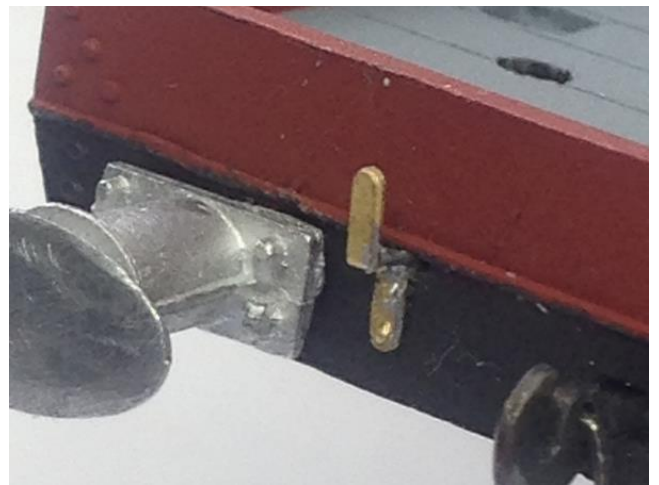
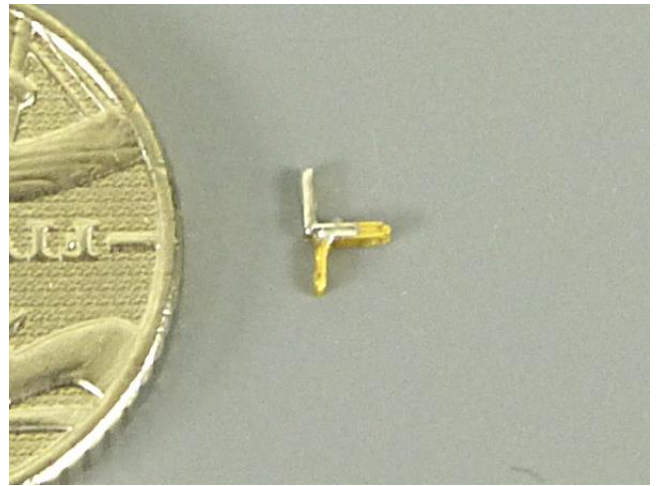
SM79D Lamp Bracket Round Base

3. It is recommended that the upright of the lamp bracket is reinforced with solder.

First apply flux and then holding the end of the tang with fine pliers, apply a very small amount of solder, using a soldering iron with a fine tip to the lamp bracket. Allow the solder to flow into the half etch bend and into the double layer.

Remove any remains of the half etch tab.

4. The lamp bracket can then be mounted in a 0.8mm hole drilled as required.



Email: stensonmodels@btinternet.com

Website: www.stensonmodels.co.uk