

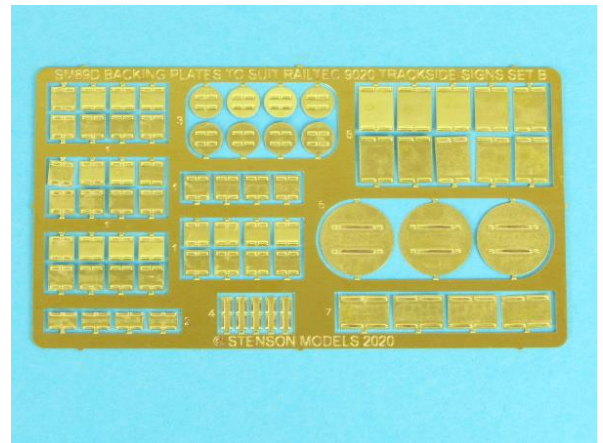
SM89D Backing Plates to suit Railtec 9020 Trackside Signs Set B

INTRODUCTION

The backing plates are designed using half etched brass. On the rear of the plate there is a representation of the fixing bars. These fixing bars have gaps in them to locate and align the wire used

Items 1, 2, 3 & 4 require 0.5mm brass wire to complete. While items 5, 6 & 7 require 1mm brass wire to complete.

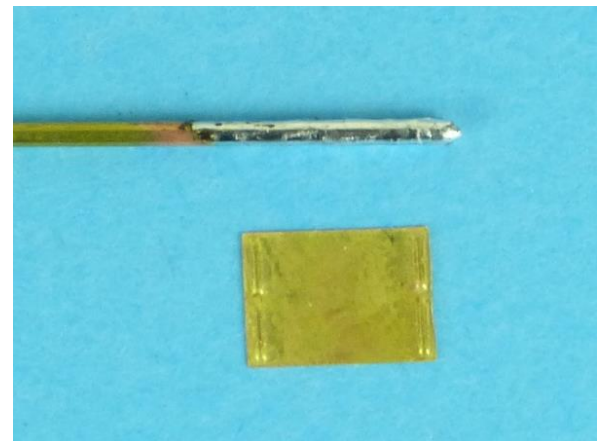
Note that the brass wire is not included. Also determine the length required by looking at your chosen prototype as this varies with location.



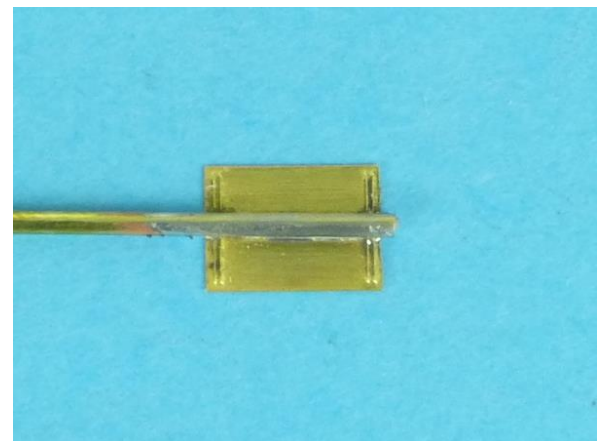
Construction

Release the required plate from the fret and carefully remove any remains of the half etch tabs. Take a length of wire that is appropriate to the backing plate and tin a sufficient length with solder to fix to it the plate.

Do not tin with an excess of solder, otherwise the fixing bars could flood. Please see the next step.



Apply flux to back of the plate and placing the wire in gaps of the fixing bars, sweat the tinned wire into position. The gaps will hold the wire central and vertical. Take care not to allow the solder to run and flood the fixing bar.



Clean the sign, removing any remaining flux. Then paint and apply transfer as required.



Email: stensonmodels@btinternet.com

Website: www.stensonmodels.co.uk